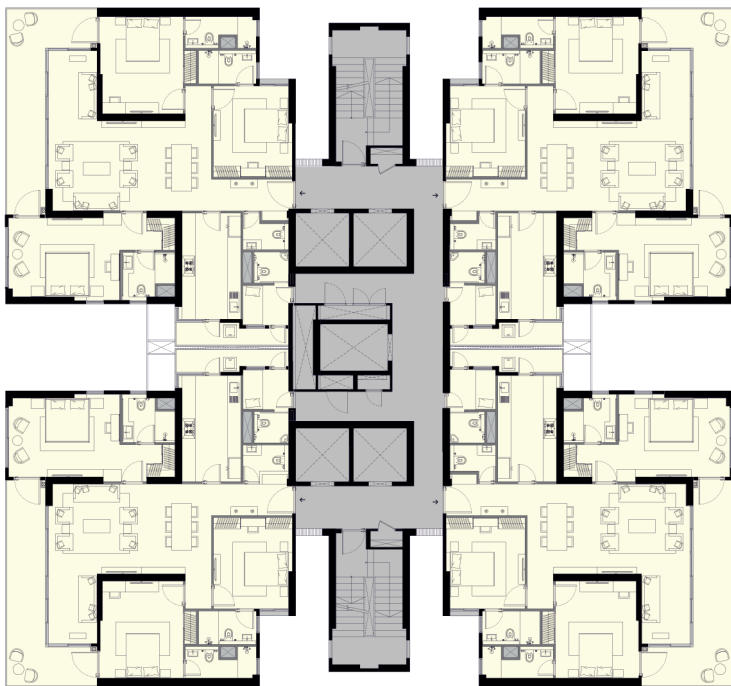


Typical Floor Plan of Tower - A



This does not constitute a legal offer. All areas and dimensions are tentative and subject to change till the final completion of the Project as permissible under applicable laws. This brochure contains artistic impressions and no warranty is expressly or impliedly given that the completed development of the Project will comply in any degree with such artist's impression as depicted. All layouts, plans, specifications, dimensions, designs, measurements and locations are indicative, not to scale and are subject to change as may be decided by the Developer or the competent authority. For further details, please refer the Agreement for Sale. Soft furnishings, cupboards, furniture and gadgets, etc. are not part of the offering and are only indicative in nature and are only for the purpose of illustrating/indicating a conceived layout and do not form part of the standard specification/amenities/services to be provided.

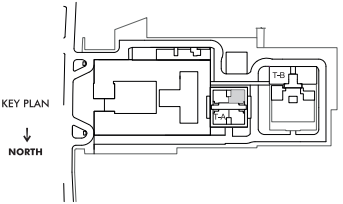
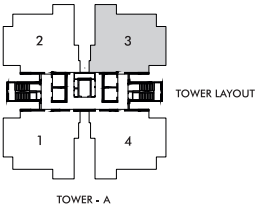
Typical Floor Plan of Tower - B



This does not constitute a legal offer. All areas and dimensions are tentative and subject to change till the final completion of the Project as permissible under applicable laws. This brochure contains artistic impressions and no warranty is expressly or impliedly given that the completed development of the Project will comply in any degree with such artist's impression as depicted. All layouts, plans, specifications, dimensions, designs, measurements and locations are indicative, not to scale and are subject to change as may be decided by the Developer or the competent authority. For further details, please refer the Agreement for Sale. Soft furnishings, cupboards, furniture and gadgets, etc. are not part of the offering and are only indicative in nature and are only for the purpose of illustrating/indicating a conceived layout and do not form part of the standard specification/amenities/services to be provided.

TOWER A (3BHK)

Carpet Area: 139 sq. mt. / 1,496 sq. ft.
Balcony Area: 25.5 sq. mt. / 275 sq. ft.

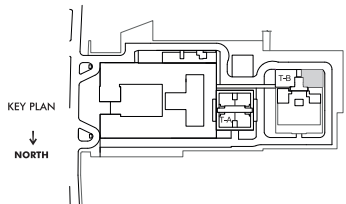
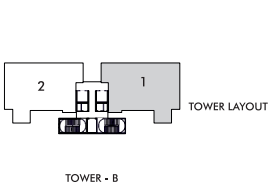


This does not constitute a legal offer. All areas and dimensions are tentative and subject to change till the final completion of the Project as permissible under applicable laws. This brochure contains artistic impressions and no warranty is expressly or impliedly given that the completed development of the Project will comply in any degree with such artists' impression as depicted. All layouts, plans, specifications, dimensions, designs, measurements and locations are indicative, not to scale and are subject to change as may be decided by the Developer or the competent authority. For further details, please refer the Agreement for Sale. Soft furnishings, cupboards, furniture and gadgets, etc. are not part of the offering and are only indicative in nature and are only for the purpose of illustrating/indicating a conceived layout and do not form part of the standard specification/amenities/services to be provided.

[UNIT PLAN]

TOWER B (4BHK)

Carpet Area: 171 sq. mt. / 1,840 sq. ft.
Balcony Area: 47 sq. mt. / 506 sq. ft.



This does not constitute a legal offer. All areas and dimensions are tentative and subject to change till the final completion of the Project as permissible under applicable laws. This brochure contains artistic impressions and no warranty is expressly or impliedly given that the completed development of the Project will comply in any degree with such artist's impression as depicted. All layouts, plans, specifications, dimensions, designs, measurements and locations are indicative, not to scale and are subject to change as may be decided by the Developer or the competent authority. For further details, please refer the Agreement for Sale. Soft furnishings, cupboards, furniture and gadgets, etc. are not part of the offering and are only indicative in nature and are only for the purpose of illustrating/indicating a conceived layout and do not form part of the standard specification/amenities/services to be provided.